



TURF SAVER[®]

Rhizomatous Tall Fescue



SELF-REPAIRING TURF



PLANT A LEGACY.

barusa.com



TURF SAVER® *Rhizomatous Tall Fescue*

THE ONLY TURF YOU'LL EVER NEED

Turf Saver® RTF® is the most advanced, unique tall fescue blend on the market. Featuring a unique combination of high quality turf-type tall fescues and RTF varieties, Turf Saver RTF is a problem solver. Providing the benefits of rhizomes not found in any other tall fescue varieties, Turf Saver RTF has the ability to quickly fill in damaged and bare spots in your lawn with new shoots of grass. This results in less over-seeding, fewer weed problems and no wide-leaved ugly clumps of grass like other tall fescues can form.

The technology behind **Turf Saver RTF** is protected with a US patent, #6677507. Its value over traditional tall fescue varieties is substantial.

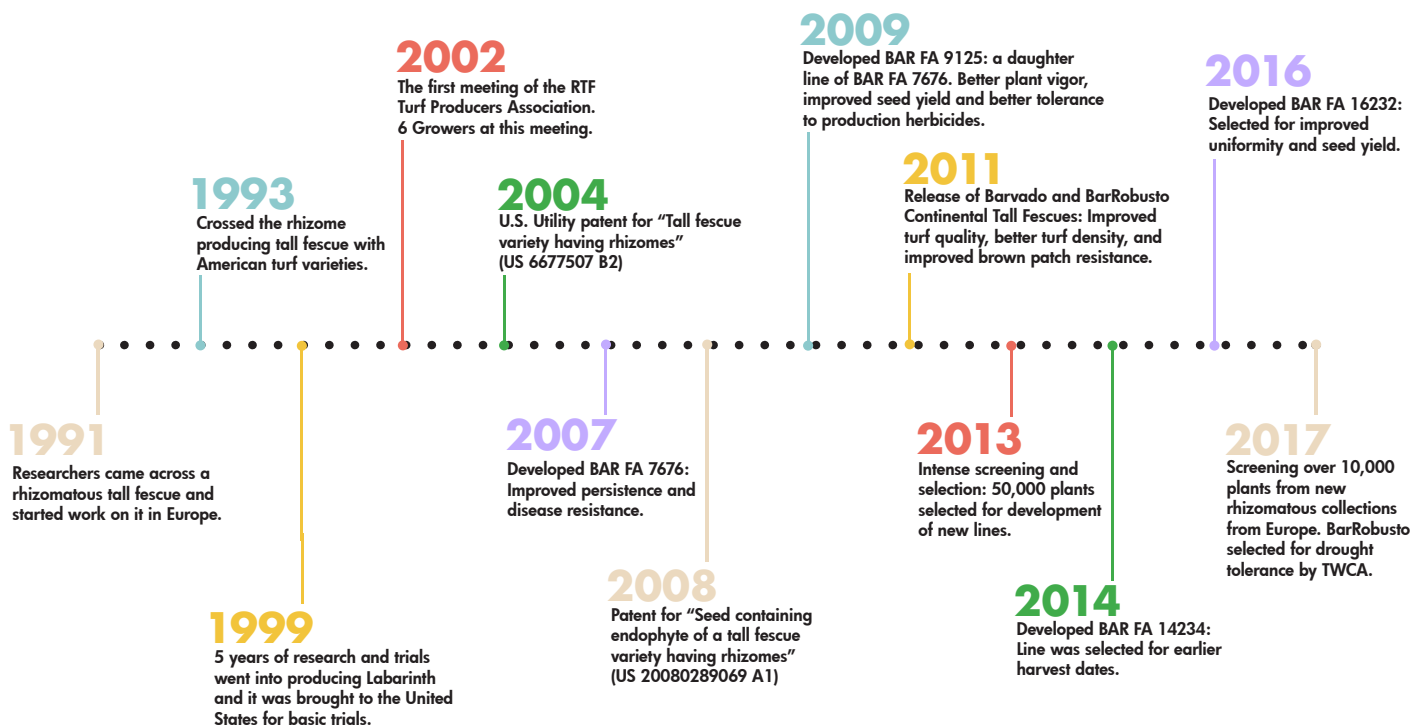


- Repairs itself. Turf Saver RTF's rhizomes fill in bare areas in thinning turf stands
- Produces a dense, lush green turf
- Promotes deep-rooting plants, with great tolerance to heat and drought conditions
- Saves on over-seeding costs of damaged turf
- Saves on water and irrigation costs

THE HISTORY OF RTF

For over 15 years now, Barenbrug turf breeders and researchers have been developing this superior tall fescue variety. RTF has been bred to develop rhizomes while

other tall fescues can not. Turf Saver RTF provides the rhizomes while other spreading varieties only promise potential, aggressive tillering and maybe.



RHIZOMES TO THE RESCUE

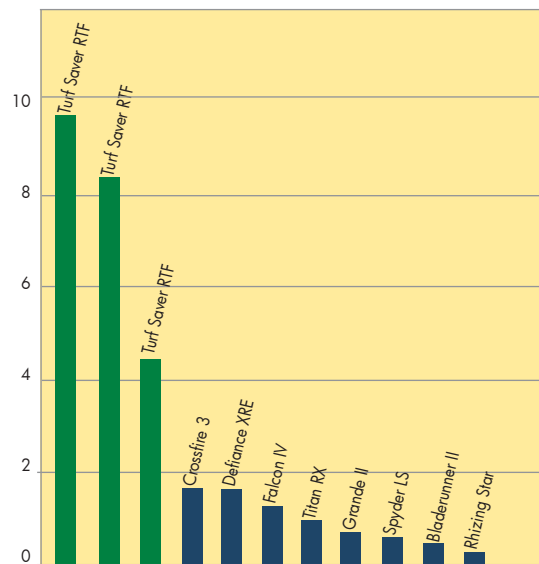
A rhizome (from Greek, meaning root-stalk) is a horizontal plant stem, most often found underground. Rhizomes are valued because they send out new tillers underground which emerge several inches away from the mother plant. Barenbrug's patented RTF has the highest amount of rhizome activity. Other varieties produce very few short rhizomes, while Barenbrug's RTF produces numerous long rhizomes.



Rhizomes shooting from a Turf Saver RTF plant

The graph below (Figure 1) shows the difference researchers found between Turf Saver RTF and others. Designed to factor in the percentage of plants that make rhizomes; the cultivar rhizomatous index is derived by multiplying the number of rhizomes times the percentage of plants with rhizomes and the rhizome length. Multiplying the traits together in a single mathematical index helps to identify the true rhizomatous plants from the others. When you put it all together, Turf Saver RTF is in a class of its own.

Figure 1: Rhizomatous index



RECOVER AND REPAIR

Turf Saver RTF exhibits very strong traffic tolerance and recovery when compared to traditional tall fescue. Tall fescue is typically a bunchgrass with very limited ability to repair and recover, however, RTF's unique rhizome development enables the repair and recovery of the turf. The rhizomes provide the ability to repair damaged areas, maintain uniformity and density, add to drought tolerance and reduce the need for frequent overseeding.

Barenbrug's Turf Saver RTF provides not only a dense turf canopy with a lush dark green color, but it additionally provides a softer texture and feel to its leaves than other tall fescues. Making it fun to walk and play in barefooted.



Turf Saver RTF grown on gravel in Illinois

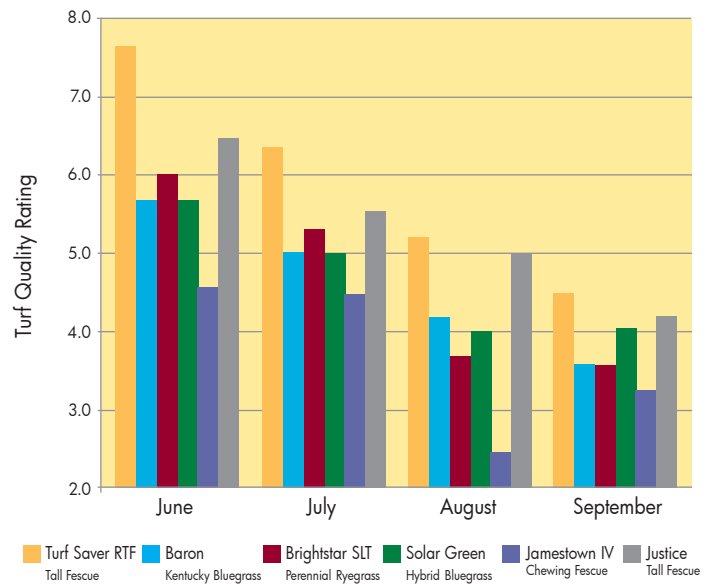
USE LESS WATER

With water conservation measures being enacted across the globe, it should be noted that Turf Saver RTF thrives on less water. Turf Saver RTF's extensive root system has the ability to draw moisture from a deep soil profile, which helps it use less water and makes it adaptable in a wide range of soils. One of the deepest rooting grasses available: Turf Saver RTF's roots can travel down six feet or more depending on the soil to extract water not readily available to other tall fescues.

New Mexico State University observed how cool season grasses (like tall fescue) would maintain turf quality under drought conditions. The turf grasses were evaluated after reducing water way below what is considered ideal to maintain quality. Turf Saver RTF performed better than any other cool season grass – during the hottest months of the year. (See Figure 2) Turf Saver RTF also performed better than Kentucky and Texas bluegrass, perennial ryegrass, and other tall fescues highly ranked by the National Turfgrass Evaluation Program.

FIGURE 2

Visual Turf Quality Ratings at 15% Less than the Daily Water Requirements (as measured by ET-Evapotranspiration)



TWCA APPROVED

In 2017, BarRobusto, a component of Turf Saver RTF, became TWCA approved. In order for a turf grass consumer product blend or mixture to be qualified to use the TWCA label, a minimum of 60% of the varieties included in that product blend or mixture must be TWCA qualified. For any variety to qualify, it must pass multiple screenings of scientifically repeatable



drought stresses, and score at or near the top of any statistical analysis base.

Once qualified, varieties retain their qualification for a maximum of eight years. After the qualification has expired, varieties must requalify against a higher standard of drought tolerance making the TWCA qualification process a series of incremental reductions in overall water need for turfgrasses. To learn more visit www.tgwca.org

"I have really enjoyed your RTF product. I am still the envy of the neighborhood and have been told our lawn looks like Wrigley field."

Brandon M. • Peoria, IL

INSECT AND DISEASE RESISTANCE

Turf Saver RTF is endophyte enhanced which provides excellent protection against insects, diseases and improves drought tolerance. Tall fescue is naturally high in endophytes, which deters insects from feeding on the leaves of the plant. This deterrent allows the plants to be more resistance to insects and the damage they cause. Endophytes also help to increase the tall fescue's ability to resist heat stress. Additionally, studies have shown that the natural Endophyte in tall fescue may help with disease pressures.

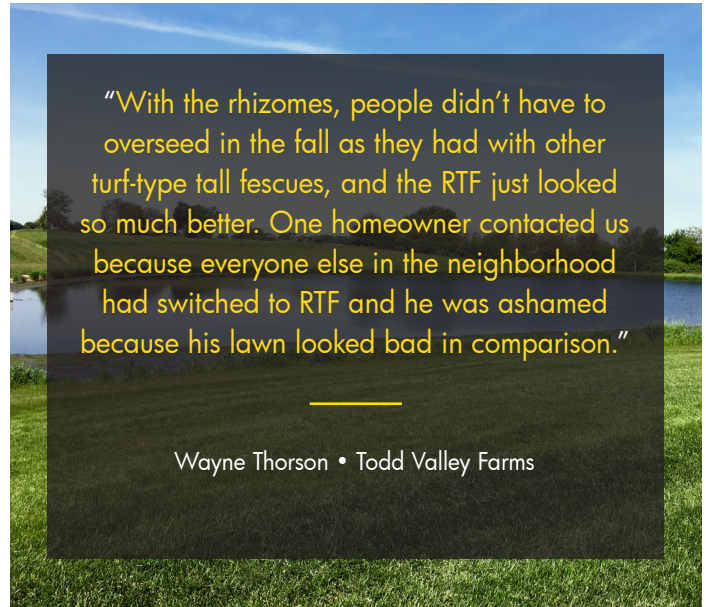


Rhizomes and roots on RTF grass

SEEDING RATE AND MAINTENANCE

The recommended seeding rate for Turf Saver RTF is 350 lbs. per acre or about 8 lbs. per 1,000 sq. ft. Seeding at lower rates slows establishment, increases weed potential and increases the time needed to establish before use. Turf Saver RTF is quick to establish after germination. Germination typically happens within 10-14 days, when the weather is optimum. Turf Saver RTF also preforms very well when over-seeded into an existing turf. Depending upon use, Turf Saver RTF may be mowed for a fairway cutting height as low as 1/2" or up to 3" for roughs, bunker faces or lawns.

Maintain healthy turf quality with an annual fertilizer program. Tall Fescue is naturally a water saver, and Turf Saver RTF is no exception with one of its components being TWCA approved for drought tolerance.



"With the rhizomes, people didn't have to overseed in the fall as they had with other turf-type tall fescues, and the RTF just looked so much better. One homeowner contacted us because everyone else in the neighborhood had switched to RTF and he was ashamed because his lawn looked bad in comparison."

Wayne Thorson • Todd Valley Farms

RTF SOD AVAILABILITY

RTF is available for sod production exclusively through the RTF Turf Producers Association.

RTF sod producers can be found at:
www.rtf sod.com





TURF SAVER[®] *Rhizomatous Tall Fescue*

BENEFITS OF TURF SAVER RTF



Use Less Water

- Rapid development of a deep root system
- Excellent drought and heat tolerance with less irrigation
- Adaptable to a wide range of soil conditions



Self-repairing Turf

- Only Tall Fescue with true rhizomes that quickly fills in damaged or open spots with new grass
- High level of traffic tolerance
- Dense turf without open areas prevents weed growth



Unique Technology

- Patented Technology
- Excellent in the transition zone and other tall fescue turf regions
- One of the most shade tolerant cool season grasses



Reduced Inputs

- Endophyte enhanced for improved insect, disease and drought tolerance
- Environmentally friendly, reduces chemical and fertilizer inputs
- Will not brown out in the intense summer heat

BEWARE OF IMITATORS:

Since the breakthrough discovery of rhizomes, Barenbrug Research has released a number of other rhizomatous tall fescue varieties, and new varieties are continuously being developed. Because of Turf Saver RTF's effectiveness and popularity, other seed companies have tried to imitate Barenbrug's products. While some may advertise rhizomatous varieties, university and independent testing has proven conclusively that Turf Saver RTF is a cut above the competition.

UTILITY PATENT

#6,677,507



800.547.4101 • www.barusa.com